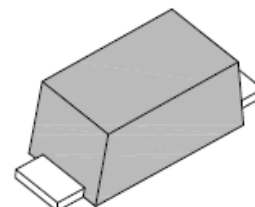


1.0A Surface Mount Schottky Rectifier

Features

- Switching power supply
- Reverse battery connection protection
- For use in low voltage
- High frequency inverters
- RoHS compliant



SOD-123F



Mechanical Data

Case:	SOD-123F, Molded plastic body
Terminals:	Solder plated, solderable per MIL-STD-750, Method 2026
Polarity:	Cathode mark on the body
Weight:	0.0173 gram

Maximum Ratings & Electrical Characteristics ($T_{Ambient}=25^{\circ}C$ unless noted otherwise)

Symbol	Description	MFLS14	Unit	Conditions
	Marking Code	B14		
V_{RRM}	Max. Repetitive Peak Reverse Voltage	40	V	
I_{F(AV)}	Max. Forward Average Output Rectified Current	1.0	A	
I_{FSM}	Peak Forward Surge Current	22	A	Non-Repetitive 60Hz
V_F	Max. Forward Voltage	0.5	V	I _F =1.0A
I_R	Repetitive Peak Reverse Current	1.0	mA	V _R =Rated
R_{thJA}	Typical Thermal Resistance from Junction to Ambient	140	° C/W	on a grass-epoxy board
R_{thJL}	Typical Thermal Resistance from Junction to Lead	20	° C/W	
T_J	Junction Temperature	125	° C	
T_{STG}	Storage Temperature Range	-40 to +125	° C	

1.0A Surface Mount Schottky Rectifier

MFLS14

Typical Characteristics Curves

Fig.1- Typical Instantaneous Forward Characteristics

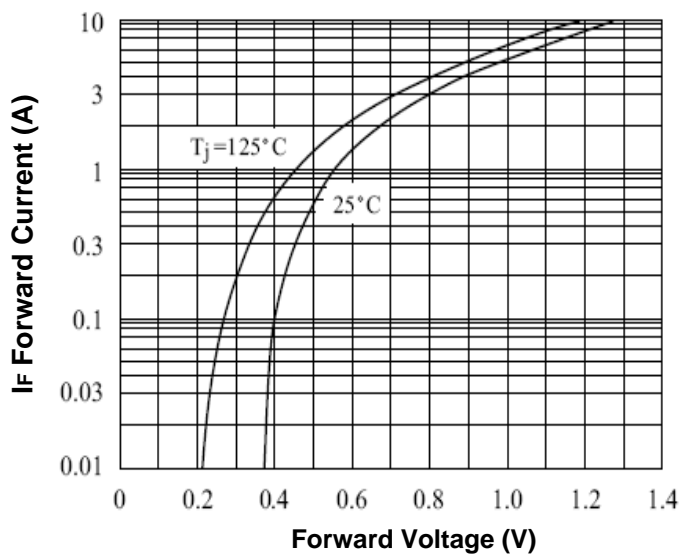


Fig.2- $P_{F(AV)} - I_{F(AV)}$

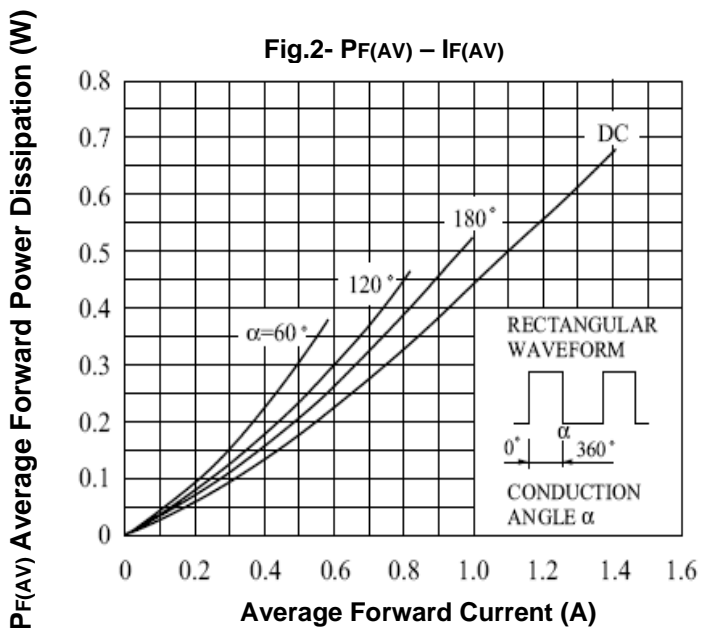


Fig.3- Surge Forward Current (Non-Repetitive)

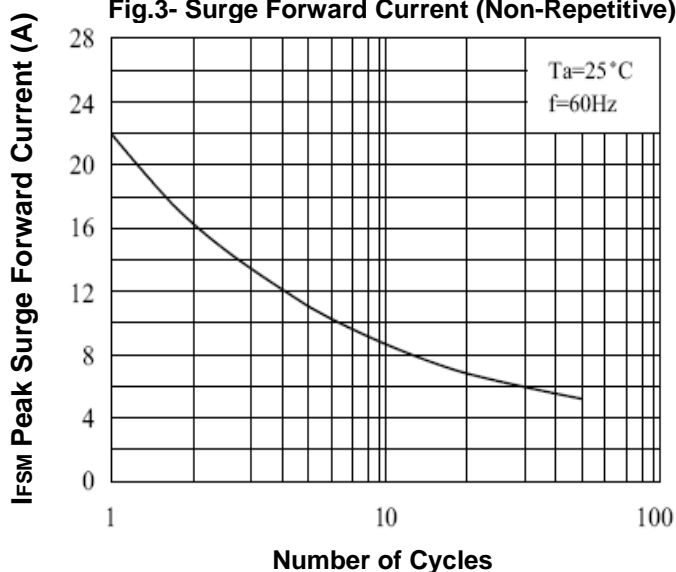
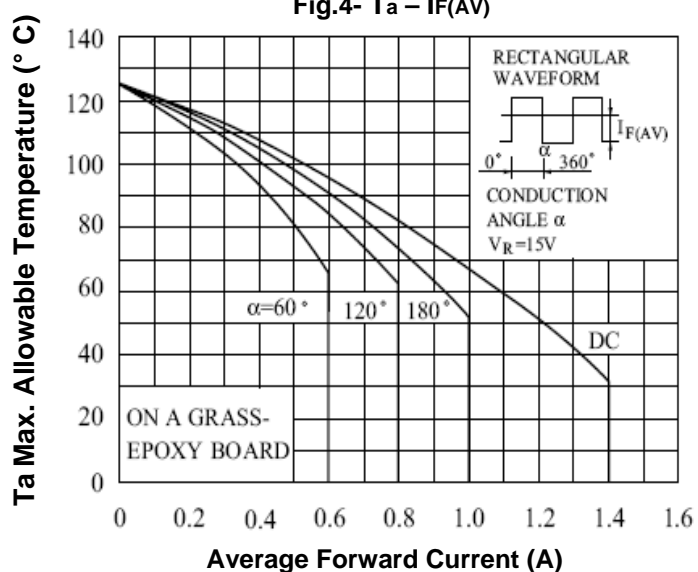


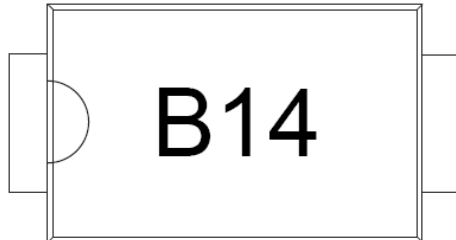
Fig.4- $T_a - I_{F(AV)}$



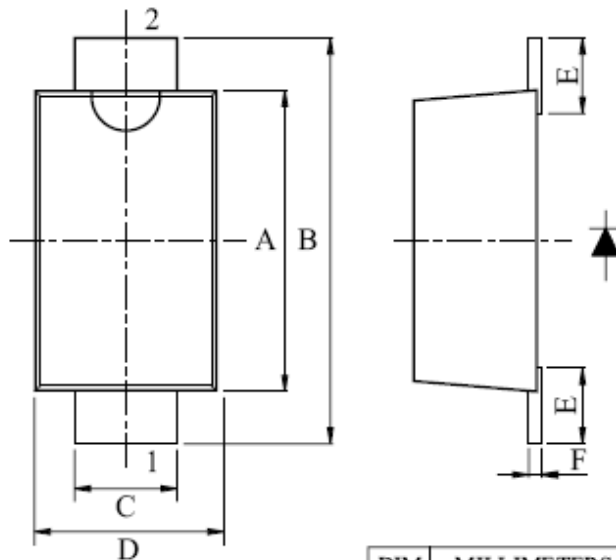
1.0A Surface Mount Schottky Rectifier

MFLS14

Marking Information:



Dimensions in mm



DIM	MILLIMETERS
A	2.6±0.05
B	3.5±0.1
C	0.9±0.05
D	1.6±0.05
E	0.65±0.05
F	0.11±0.05
G	0 ~ 0.1
H	0.98±0.05

- 1. ANODE
- 2. CATHODE

SOD-123F

1.0A Surface Mount Schottky Rectifier

MFLS14

How to contact us:

US HEADQUARTERS

28040 WEST HARRISON PARKWAY, VALENCIA, CA 91355-4162

Tel: (800) TAITRON (800) 824-8766 (661) 257-6060

Fax: (800) TAITFAX (800) 824-8329 (661) 257-6415

Email: taitron@taitroncomponents.com

Http://www.taitroncomponents.com

TAITRON COMPONENTS MEXICO, S.A .DE C.V.

BOULEVARD CENTRAL 5000 INTERIOR 5 PARQUE INDUSTRIAL ATITALAQUIA, HIDALGO C.P.

42970 MEXICO

Tel: +52-55-5560-1519

Fax: +52-55-5560-2190

TAITRON COMPONENTS INCORPORATED REPRESENTAÇÕES DO BRASIL LTDA

RUA DOMINGOS DE MORAIS, 2777, 2.ANDAR, SALA 24 SAÚDE - SÃO PAULO-SP 04035-001 BRAZIL

Tel: +55-11-5574-7949

Fax: +55-11-5572-0052

TAITRON COMPONENTS INCORPORATED, SHANGHAI REPRESENTATIVE OFFICE

METROBANK PLAZA, 1160 WEST YAN' AN ROAD, SUITE 1503, SHANGHAI, 200052, CHINA

Tel: +86-21-5424-9942

Fax: +86-21-5424-9931